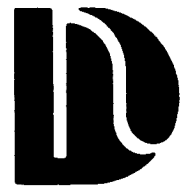


Service Bulletin  
**Dixie-Narco®**



Lawrence Street  
Ranson, West Virginia 25438

(304) 725-3481  
(800) 624-0553

**Service Bulletin #** \_\_\_\_\_ Date: July 25, 1989

MODELS: Dual Adaptables With Narrow Columns

SUBJECT: Bottle Vending From Narrow Columns 10 oz. Returnable Bottles in addition to 6 1/2 oz., 7 oz. & 8 oz.

REASON: To Provide a Kit for Narrow Columns so that certain 10oz. Bottles will not "Nose Down" and to prevent the "Neck of The Bottle" at times from going under the Rear Bottle Guide.

KIT NAME: Insulator Pad & 8" Tube

ORDERING: Order Kits by Model # of Vender

INSTALLATION: INSULATOR PADS:

1. Insulator Pads are to be attached to each of the rear bottle guides - Narrow Columns Only.
2. Study the drawings, (Fig 1, 2 & 3).
  - a. All holes to be drilled are 7/64" Diameter.
  - b. All holes are located 7/16" from left or right edge of rear bottle guide but vertical dimensions from top vary as drawing indicates.
  - c. Example:
    - C-1 See Fig. 1
    - C-2 Drill 7/64" Diameter Hole - 4 1/2" from top and 7/16" from right edge.
    - C-3 Place Pad - smooth side out onto guide, Fig. 4.
    - C-4 Notice that one (1) hole in insulator pad is closer to edge than the other. Align this hole with hole just drilled in rear bottle guide. Secure with screw - loosley.
    - C-5 Refer to Fig. 4 - pivot pad to horizontal position - remaining hole in pad should be low and to the left.
    - C-6 Keep pad horizontal - use pad as template to locate & drill remaining hole.
    - C-7 Secure with screw.
3. Use this outlined procedure to install other pads.

8 INCH LONG WHITE TUBE - 17/32" OD:

- 1a. The 8" White Tube is to be installed on the bottle rod. That is, slide white tube onto bottle rod before installing rod in Vend Rotor. See revised Shim List - Service Bulletin #180.
- b. Install Bottle Rod in "A" holes in the Vend Rotor.

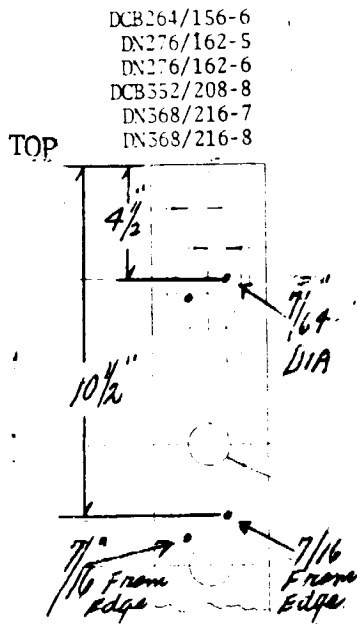


FIG. 1 (Front)  
Rear Bottle Guide 2  
Pads/Guide (7/16"  
Typical)

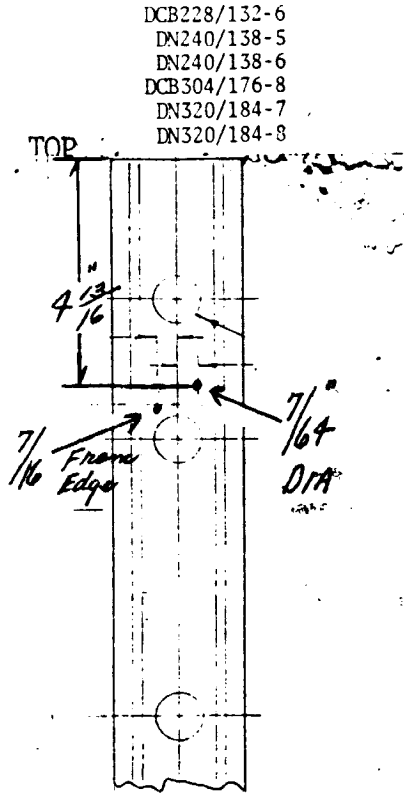


FIG. 2 (Front)  
Rear Bottle Guide  
1 Pad/Guide

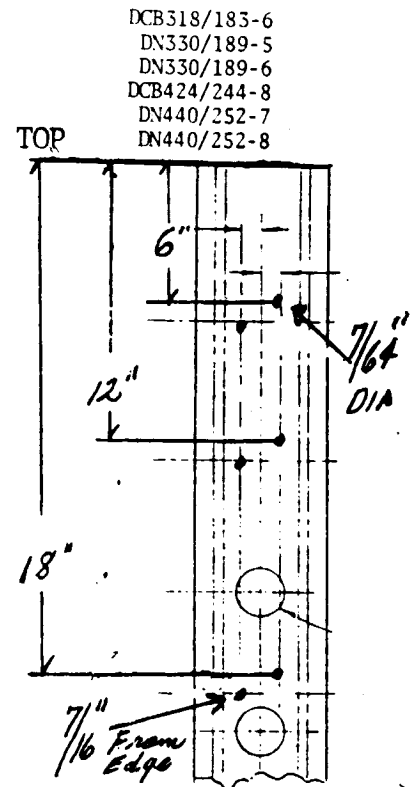


FIG. 3 (Front)  
Rear Bottle Guide  
3 Pads/Guide

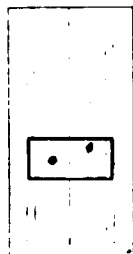


FIG. 4 (Front)  
Rear Bottle Guide  
Pad in position

Requirements:

NARROW COLUMN PLASTIC TUBES REQUIRED PER VENDER MODEL	VENDER MODEL	NARROW COLUMN INSULATOR PADS REQUIRED PER VENDER MODEL	SCREWS PER VENDER MODEL
3	DCB156/93-6	0	0
3	DN168/99-5	0	0
3	DN168/99-6	0	0
3	DCB228/132-6	3	6
3	DN240/138-5	3	6
3	DN240/138-6	3	6
3	DCB264/156-6	6	12
3	DN276/162-5	6	12
3	DN276/162-6	6	12
3	DCB318/183-6	9	18
3	DN330/189-5	9	18
3	DN330/189-6	9	18
4	DCB304/176-8	4	8
4	DN320/184-7	4	8
4	DN320/184-8	4	8
4	DCB352/208-8	8	16
4	DN368/216-7	8	16
4	DN368/216-8	8	16
4	DCB424/244-8	12	24
4	DN440/252-7	12	24
4	DN440/252-8	12	24

KIT PARTS:

Insulator Pad - #801,804,350.11

Screw - #900,300,160.01

8" White Tube - #901,901,780.01